



Blu Away/Bio Blu Enzyme Cleaner



When dosing concentrate chemicals always use the recommended PPE, and always read the labels to check best practice for handling both the undiluted & ready to use solutions.

Product Usage Guide

PREMIUM

BC065-5



Areas of use



Health & Safety

Please refer to relevant COSHH Safety Data Sheet



Scan for further product details

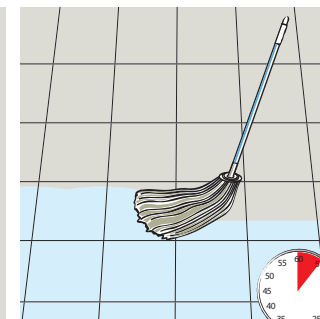
Mopping



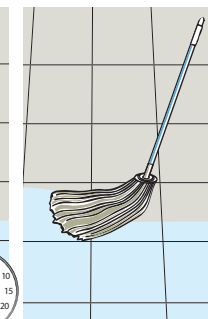
1 Use appropriate PPE as indicated in the Safety Data Sheet and place Safety Signs.



2 Dilute product 1:1 part water for severe odours or 1:20 parts water for general maintenance.



3 Mop contaminated surfaces, working well into the soiling with a clean, damp mop. Leave for 5 minutes.



4 Mop away excess then leave to air dry.



5 Remove Safety Signs.

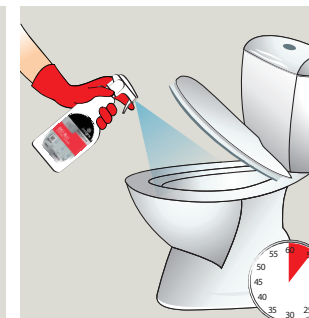
Spraying



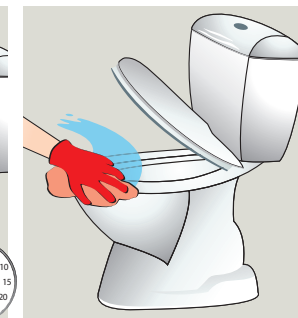
1 Use appropriate PPE as indicated in the Safety Data Sheet and place Safety Signs.



2 Dilute product 1:1 part water for severe odours or 1:20 parts water for general maintenance.



3 Spray contaminated surfaces, working well into the soiling with a clean, damp cloth. Leave for 5 minutes.



4 Wipe away excess then leave to air dry.



5 Remove Safety Signs.



Do not store diluted product.