

# Floor Polish and Cleaner



When dosing concentrate chemicals always use the recommended PPE, and always read the labels to check best practice for handling both the undiluted & ready to use solutions.

## Product Usage Guide

### BD101-5



#### Health & Safety

Please refer to relevant Safety Data Sheet

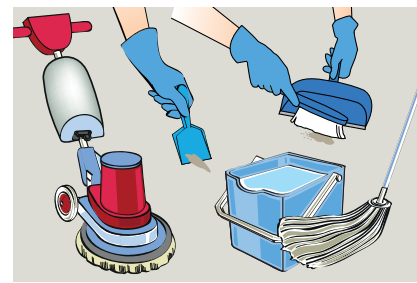


Scan for further product details

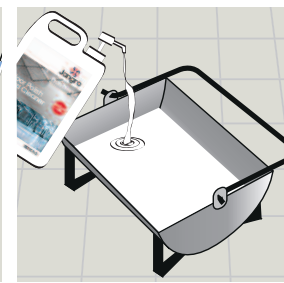
#### Polish



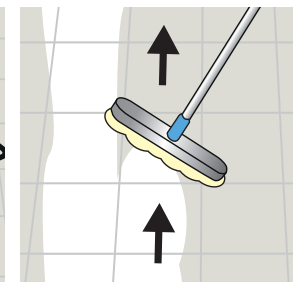
- 1 Use appropriate PPE as indicated in the Safety Data Sheet and place Safety Signs.



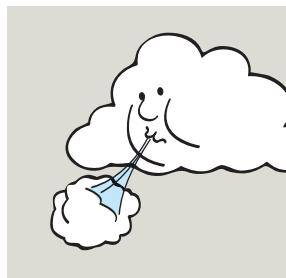
- 2 Prepare the floor, remove all traces of old polish/sealer. Ensure floor is clean dry and neutral.  
Refer to the Jangro Floor Care Chart or the Product Usage Guide for Floor Polish Remover or guidance on Floor Preparation.



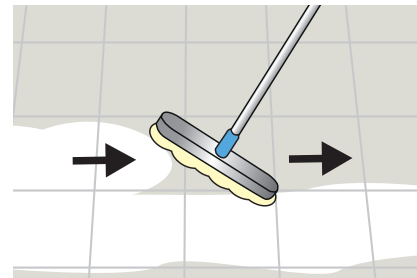
- 3 Pour polish into bucket or tray. (undiluted).



- 4 Apply polish to dry floor, thinly and evenly in straight lines using an applicator pad or a lint free mop



- 5 Leave to dry thoroughly.



- 6 Apply second coat and burnish if necessary for extra high gloss.



- 7 Remove Safety Signs.