

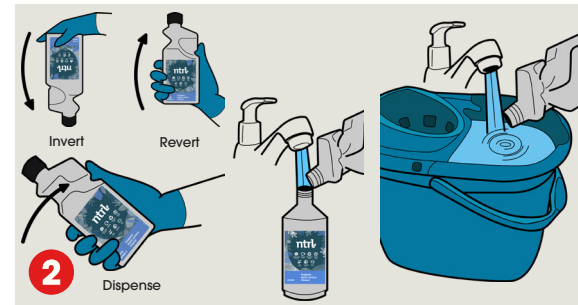
# BF068-1 Probiotic Multi-Surface Cleaner



For use on floors, walls & Surfaces



Place safety Sign & equip the appropriate PPE as indicated in SDS.



Invert, revert and dispense the correct amount. Dilute 1x4ml to 600ml of cold water (1:150). For mopping, dilute 1x30ml to 5 litres of cold water (1:200).



Spray surfaces and Wipe or mop.



Remove safety signs when dry.

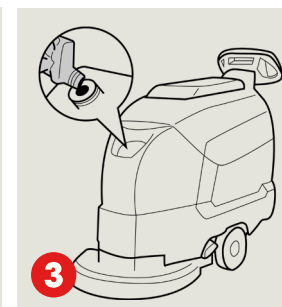
Scrubber dryer



Place safety Sign & equip the appropriate PPE as indicated in SDS.



Invert & revert to trap the correct amount in the dispensing chamber.



Dilute 1x30ml to 10 litres of cold water (1:300).



Clean floor & leave to dry.



Remove safety signs when dry.

## Areas of Use



### WARNING



Scan me for further product details including COSHH Safety Data Sheet



Cleaning equipment must be cleaned with products from the ntrl range, do not mix with other cleaning chemicals.

